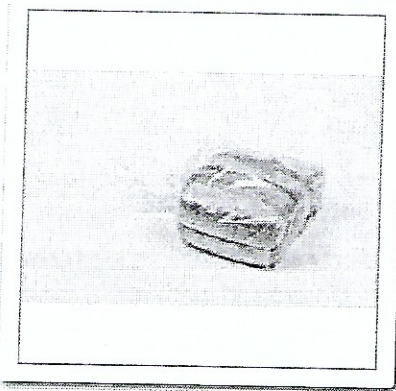


Print: ☒ More ☒ Nutrition ☒ Additional Images ☐ Print ☐ Close

Product Details

**Sienna Bakery 6 Inch Brioche Hoagie Buns, Frozen, 2.5 Ounce, 8 Ct Package, 16/Case**

Item Number: 858591

Staking its claim as the king of burger buns today, brioche characteristics translate well to other sandwich carriers, too. Boasting a rich, tender crumb with a firm structure, brioche is available as rolls and buns to fit any of your menu needs. Use the Brioche Hoagie Roll for, spicy meatball sub.

- Menu mentions of brioche have gone up 72% in the last four years (Datassential MenuTrends, 2017)
- Serve Casual or Upscale
- On-Trend
- Menu Differentiation
- Premium Quality

More**Manufacturer**

Pack	16 / Case
Portion Size	Each
Portion/Case	128
Kosher	Yes
Net Weight	20

Item Yield

1 Case = 128 (16 x 8 per Package) Buns, Brioche Hoagie, 6 Inch, Frozen, 2.5 Ounce

Thawing Instructions

Thaw at room temperature.

Shelf Life

Thaw at room temperature.

Basic Preparation

Thaw and serve.

Marketing Tips

Take your sandwiches to the next level with this golden brown, split top brioche Hoagie roll. Perfect for both toasted and cold culinary creations. ** Casual dining, Fine dining, Sports bars, Bistros, Hotels, Country clubs/Resorts, Concession, Food Trucks, College & University, B&I Operators.

Nutrition

Print: ☒ More ☒ Nutrition ☒ Additional Images Based On: Rounding: **Ingredients**

Enriched Flour (Wheat Flour, Malted Barley Flour, Niacin, Iron, Thiamin Mononitrate, Riboflavin, Folic Acid), Water, Sugar, Eggs, Glaze (Water, Pea Protein, Wheat Protein, Potato Protein, Rice Protein, Sunflower Oil, Dextrose, Maltodextrins, Cornstarch), Yeast, Wheat Gluten, Soybean Oil, Palm Oil, Contains 2% or less of the following: Oat Flour, Potato Flakes, Salt, Natural & Artificial Flavors, Calcium Sulfate, Ascorbic Acid, Calcium Peroxide, Calcium Propionate and Potassium Sorbate (Preservatives), Corn Flour, Spices (Turmeric and Paprika), Mono & Diglycerides, Monocalcium Phosphate, Ammonium Sulfate. **COMMON ALLERGENS PRESENT:** Wheat, Eggs. Prior to consuming the product, individuals with severe food allergies should confirm the ingredient information on the actual label of the product. Nutrition and Ingredient statement updated December 2017. This ingredient and nutrition information was provided by the third-party product manufacturer and/or supplier and was not in any way created or verified by GFS. The information is being passed on as a courtesy and for informational purposes only. GFS in no way guarantees the accuracy or completeness of this information and NO WARRANTIES ARE MADE OR IMPLIED; ALL IMPLIED WARRANTIES OF MERCHANTABILITY AND FITNESS FOR A PARTICULAR PURPOSE ARE EXPRESSLY EXCLUDED.

Nutrition Facts

Serving Size 1 each (71g)	
Amount Per Serving	
Calories 200	Calories from Fat: 40.5
% Daily Value *	
Fat 4.5g	7%
Saturated Fat 1.5g	8%
Trans Fat 0g	
PolyUnsat. Fat	n/a
MonoUnsat Fat	n/a
Cholesterol 20mg	7%
Sodium 300mg	12%
Potassium 85mg	2%
Carbohydrates 32g	11%
Fiber 1g	4%
Sugar 7g	
Protein 6g	12%
Vitamin C 0% Calcium 4% Iron 10%	
* Based on a 2000 calorie diet	

Print: ☒ More ☒ Nutrition ☒ Additional Images [Print](#) [Close](#)

Meat/Meat Alternative	n/a
Fruit/Vegetables	n/a
Grain/Breads	n/a
Red/Orange	n/a
Dark Green	n/a
Starchy	n/a
Beans/Peas	n/a
Other	n/a
Notes:	n/a

Fat Soluble Vitamins:

Vitamin D IU	n/a
Vitamin K	n/a
Vitamin A IU	

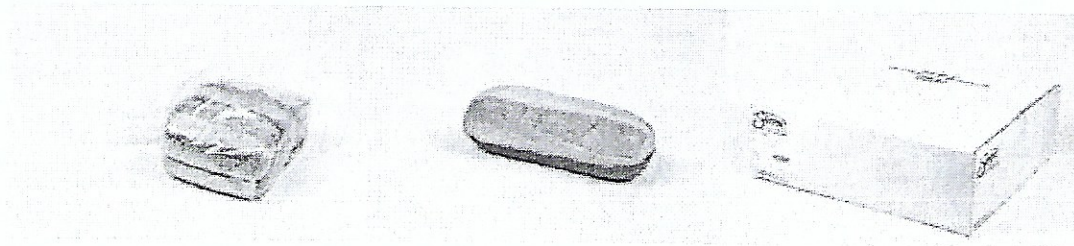
Water Soluble Vitamins:

Thiamin	n/a
Riboflavin	n/a
Pantothenic Acid	n/a
Folic Acid	n/a
Vitamin C	

Minerals:

Phosphorous	n/a
Zinc	n/a
Magnesium	n/a
Copper	n/a
Selenium	n/a
Calcium	48 mg
Iron	2 mg
Iodine	n/a

Additional Images



Description:

A Shredded, Soft, Nonstandard Of Identity Cheese With A Mild Dairy Flavor And White To Light Cream Color. -- Product Benefits: Preshred For Convenience & Reduced Labor Cost. 100% Usable With No Yield Loss -- Prep & Cooking Instructions: Ready For Use Right Out Of The Cooler. Best If Left Sitting For Approximately 20 Minutes. -- Directions For Use: 100% Usable, No Yield Loss. Labor Savings - Convenient - Keep Refrigerated -- Handling Instructions: Rewrap Unused Portions, Keep Refrigerated, And Place Away From Seafood And Other Higher Order Product. -- Serving Suggestions: Excellent Melt Via The Following Cooking Platforms; Pizza Deck Oven, Conveyor Oven, Convection Oven And Conventional Baking Oven -- Storage And Usage: Refrigerate Between 32 And 45 Degrees Fahrenheit -- Suggested Uses: Cheese Is Used For Pizza, Salad Bar And Sandwiches. Ideal For Buffet, Carry Out & Delivery Application.

Information:

Pack Size : 6/5 LB
Material Description : Cheese Mozzarella Pizza Shredded Part-Skim
Material SUPC : 6806345

Ingredients:

LOW MOISTURE PART SKIM MOZZARELLA CHEESE (CULTURED PASTEURIZED PART SKIM MILK, SKIM MILK, SALT, ENZYMES), MODIFIED FOOD STARCH, POWDERED CELLULOSE (ADDED TO PREVENT CAKING), NATAMYCIN (A NATURAL PRESERVATIVE). CONTAINS: MILK

Allergens:

CONTAINS: Milk;

Nutrition Facts

Serving Size 1 Oz (28g)

Amount Per Serving
Calories 80 **Calories from Fat 54**

% Daily Value*

Total Fat 6g 9%

Saturated Fat 3g 15%

Trans Fat 0g

Cholesterol 20mg 7%

Sodium 260mg 11%

Total Carbohydrate 1g 0%

Dietary Fiber 0g 0%

Sugars 0g

Protein 6g

Vitamin A 4% * **Vitamin C** 0%

Calcium 15% * **Iron** 0%

* Percent Daily Values are based on a 2,000 calorie diet.
Your Daily Values may be higher or lower depending on your calorie needs:

	Calories	2,000	2,500
Total Fat	Less than	65g	80g
Sat Fat	Less than	20g	25g
Cholesterol	Less than	300mg	300mg
Sodium	Less than	2,400mg	2,400mg
Total Carbohydrate		300g	375g
Dietary Fiber		25g	30g

Calories per gram:			
Fat 9	Carbohydrate 4	Protein 4	

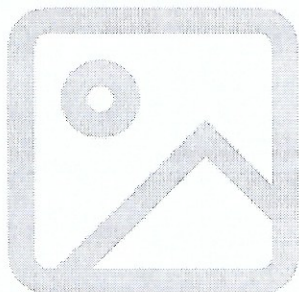
Child Nutrition No

Product Formulation Statement No

CN Identification

Notes:

Sauce Pizza Prepared-4095758



Description

No product description available

Information

Pack/Size : 6 / #10

Material Description : Sauce Pizza Prepared

Material SUPC : 4095758

Ingredients

Tomatoes, Corn Oil, Salt, Spices, Garlic Powder

Nutrition Facts

Serving Size 1/4 cup

Amount Per Serving

Calories 45

% Daily Value*

Total Fat 2.5g 4%

Saturated Fat 0g 0%

Trans Fat 0g

Cholesterol 0mg 0%

Sodium 230mg 10%

Total Carbohydrate 4g 1%

Dietary Fiber 1g 4%

Total Sugars 2g

Includes NA Added Sugars %

Protein 1g

Vitamin A 50IU 2%

Vitamin C 12.0mg 20%

Vitamin D 0mcg 0%

Calcium 0mg 0%

Iron 0.72mg 4%

Potassium 0mg 0%

The % Daily Value(DV) tells you how much a nutrient in a serving of food contributes to a daily diet. 2,000 calories a day is used for general nutrition advice.

Disclaimer

1. The nutritional values indicated may not be complete based on limited information from product manufacturer. 2. This is a representation of the nutritional label. Because the data may change from time to time, this information may not always be identical to the nutritional label information on products sold. 3. If the Nutrition Label, Allergen Information and/or Ingredient List on eNutrition conflicts with these three statements on the product packaging itself, defer to the information on the product packaging. To ensure complete and current information on a product, always contact the product manufacturer. 4. % Daily Values are based on US 1990 NLEA regulations. 5. These items' qualification as 'gluten-free' is dependent on the accuracy of the gluten-free representations of the manufacturers of the items and their ingredients. Therefore, Sysco and its affiliates do not guarantee that any item will be completely gluten-free. Consumers with celiac disease and/or gluten sensitivities should exercise proper caution in the consumption of any food items and should always consider their individual dietary requirements and needs.